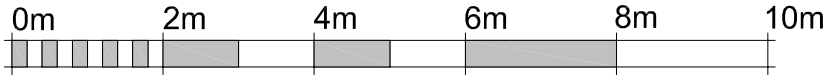


# Townhouse - 10

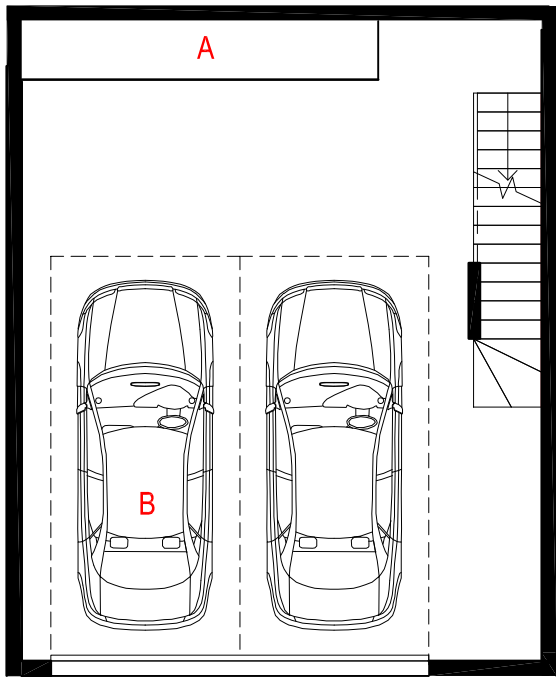
3 BEDROOM PLUS STUDY, 2.5 BATHROOM,  
2 CAR SPACE

Total Area: 253 m<sup>2</sup>  
Ground floor Area: 54 m<sup>2</sup>  
First Floor Area: 68 m<sup>2</sup>  
Basement Area: 59 m<sup>2</sup>  
Courtyards: 72m<sup>2</sup>  
Number of carpark: 2



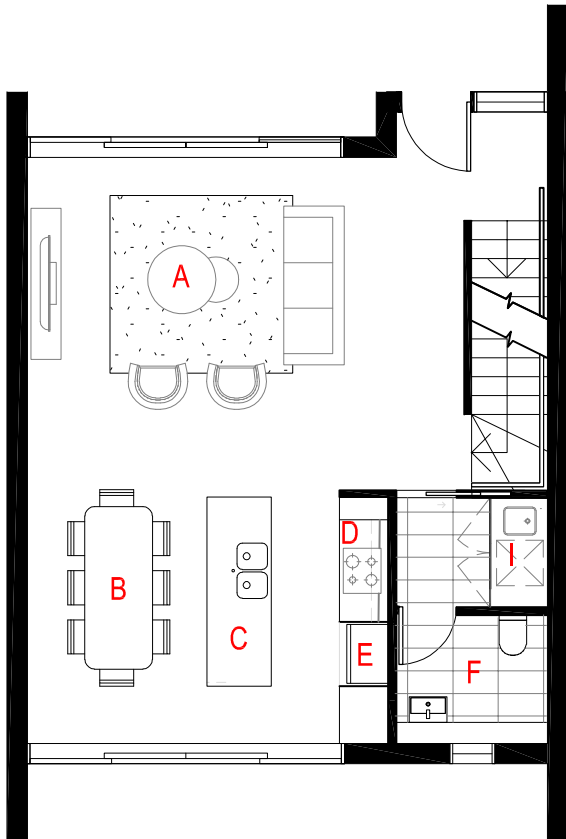
VISUAL SCALE 1:100 @ A3

## BASEMENT



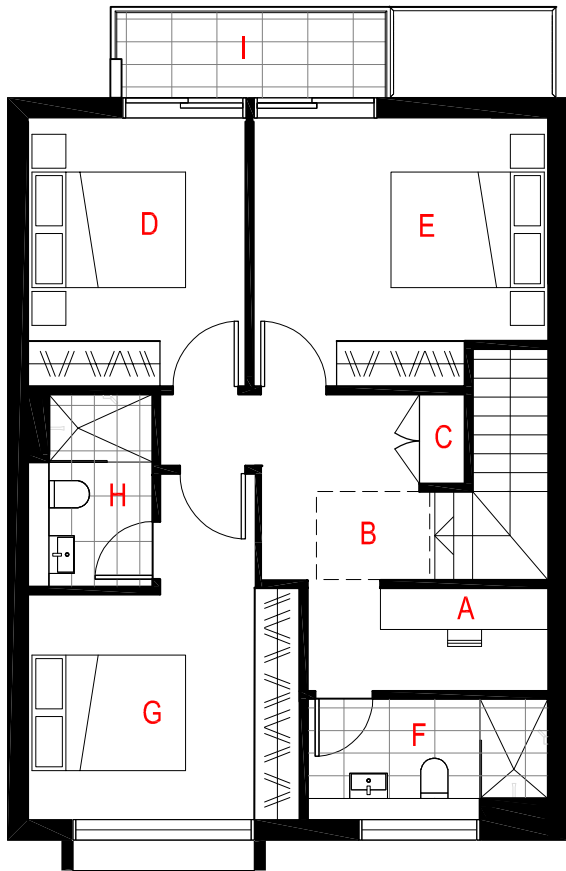
- A - Store
- B - Car Park

## GROUND FLOOR



- A - LOUNGE
- B - DINING
- C - ISLAND
- D - COOKTOP & BENCH SPACE
- E - INT FRIDGE / FREEZER
- F - POWDER ROOM
- G - LAUNDRY

## FIRST FLOOR



- A - STUDY NOOK
- B - SKYLIGHT
- C - LINEN CUPBOARD
- D - BEDROOM
- E - BEDROOM
- F - MAIN BATHROOM
- G - MASTER SUITE
- H - MASTER ENSUITE
- I - BALCONY